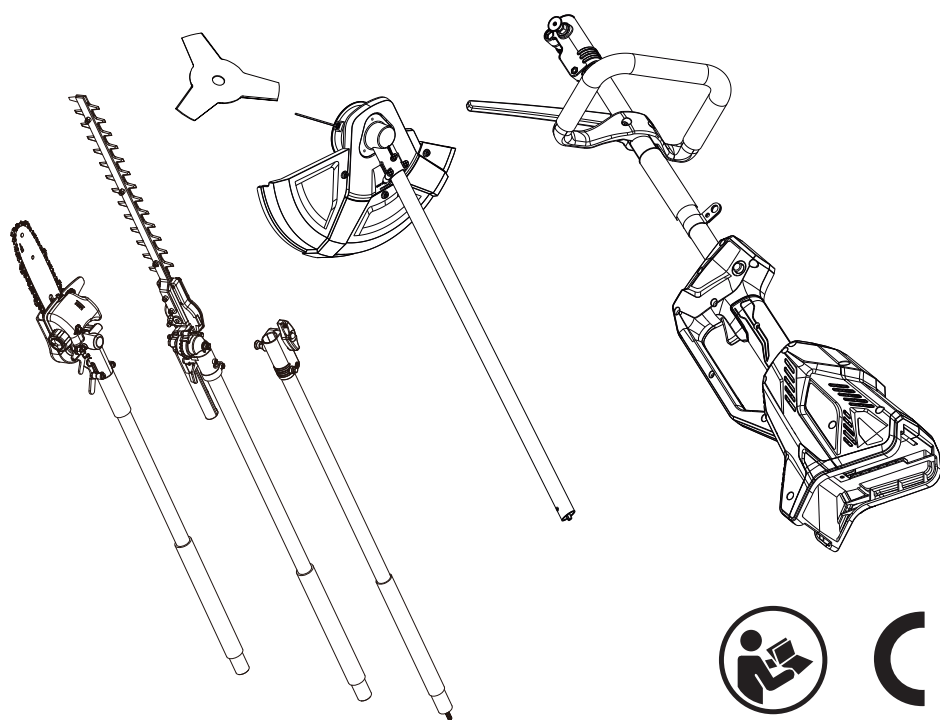


SYLVA

BATTERY GARDEN MULTI TOOL



IMPORTANT—These instructions are for your safety. Please read through them thoroughly prior to handling the product and retain them for future reference.

Original Instructions (V16 20231222)

SYMT4B

TABLE OF CONTENTS

EN	
Safety Information	03
Know your product	15
Technical Data	20
Assembly Instructions	23
Operation Instructions	35
Maintenance and storage	48
Troubleshooting	54
Guarantee	55
Customer Care	56
EC Declaration of conformity	57

SAFETY INFORMATION



Warnings! Read the instruction carefully before operating this tool. Make sure that you are familiar with the controls and properly operate the machine.



Following these instructions, you can reduce the risk of fire, electric shock and personal injury.

WARNING! Your safety and the safety of others is very important. It is not possible or practical to warn you about all the hazards associated with operating or maintaining this product. At all times you must use your own good judgement

PERSONAL/GENERAL SAFETY

IMPORTANT

READ CAREFULLY BEFORE USE

KEEP FOR FUTURE REFERENCE

- This product is not intended for use by persons (including children) with reduced physical sensory or mental capabilities, or lack of experience and knowledge, unless they have been given supervision or instruction concerning use of the product by a person responsible for their safety.
- Children should be supervised to ensure that they do not play with the product.
- Never operate the product while people, pets or children are nearby. Keep a distance of 15 metres between bystanders and the product. The operator is responsible for accidents or hazards occurring to people, pets or property.
- Always be aware of your surroundings, stay alert, watch what you are doing and use common sense when operating this product. Do not use the product while you are tired, ill or under the influence of drugs, alcohol or medication.
- Consider the work area and environment before each use. Do not expose the machine to high humidity or rain. Do not use the machine in damp and wet conditions.
- Do not use the product if the on/off Switch does not work.
- Never reach towards moving parts with your hands or feet when the product is running.
- Keep handles, switches, grasping surfaces dry, clean and free from oil and grease.
- Only work in good daylight or appropriate and adequate artificial light.
- Never operate the product with damaged guards or without safety guards fitted.

SAFETY INFORMATION

- Do not over reach. Keep proper footing and balance at all times. Never use the product standing on steps , ladder or other unsecure support.
- Dress Properly! Do not wear loose clothing or jewellery, Keep your hair and clothing away from moving parts. Use the following safety clothing and personal protective equipment (PPE) when operating this product:
 - Wear head protection, where there is a risk of falling objects.
 - Wear hearing/ear protection.
 - Wear eye protection (goggles or face shield).
 - Wear protective gloves.
 - Wear protective clothing.
 - Wear protective and slip-resistant footwear.
- Disconnect/remove the battery from the product before making any adjustments, changing accessories or storing the product.
- Do not under any circumstances modify this product. Modifications can result in serious personal injury or death.
- Store the machine out of reach of children and do not allow persons unfamiliar with these instruction to operate the product.
- Before each use or after any impact, carefully check the machine for damage. Check for misalignment or bindings of moving parts, breakage of parts, mountings and any other condition that may affect the products correct operation. Have any damaged or defective parts repaired or replaced by a qualified person.
- Only use approved replacement parts and accessories made for this machine by the manufacturer. Failure to do so can result in personal injury.
- Always ensure the ventilation openings are kept clear of debris.
- Make sure the working area is free from stones, rubble, wire or other foreign bodies before operating the product .

SAFETY INFORMATION

BATTERY SAFETY

- Recharge battery packs only with the charger specified by the manufacturer.
- Only use battery packs specifically designed for this product as specified by the manufacturer.
- Do not use a battery pack that is damaged or been modified. Do not use a battery pack that has been dropped or received a sharp blow. A damaged battery is at risk of fire, explosion or risk of injury.
- Do not place products or their batteries near fire or heat sources. Continuous intense sunlight, fire or other heat sources may cause an increased danger or explosion.
- Under abusive conditions, liquid may be ejected from the battery; avoid contact. If contact accidentally occurs, flush with water. If liquid contacts eyes, seek additional medical help.
- Do not charge a battery in a damp or wet location. Following this rule will reduce the risk of electric shock.
- Do not open up the battery and avoid mechanical damage to the battery. Risk of short circuit and fumes may be emitted. Ensure fresh air and seek medical assistance in the event of discomfort.
- Follow all charging instructions and do not charge the battery pack outside the temperature range specified in the instructions.
- Remove the battery pack from the product when not in use.
- Remove the battery pack from the charger when not in use .
- When the battery pack is not in use, keep it away from other metal objects like: paper clips, coins, keys, nails, screws or other small metal objects that can make a connection from one terminal to another. Shorting the battery terminals together may cause sparks, burns or a fire.

SAFETY INFORMATION

CHARGER SAFETY

- Operate the charger only with the appropriate original battery pack. Charging other batteries may result in injury and or risk of fire .
- Do not charge non-rechargeable batteries.
- Unplug the charger from the power supply and allow it to cool down before cleaning, maintenance, storage and transportation. Wipe clean with a dry cloth only. Never use water or chemical cleaners to clean your charger.
- Use charger indoors only, in a dry, cool and well-ventilated environment.
- When battery pack becomes fully charged, unplug the charger from the power source and remove the battery pack from the charger.
- When the charger is in use it MUST be supervised, if there is any evidence of overheating then IMMEDIATELY disconnect the charger from the power supply.
- Always unplug the charger from the power source and remove battery pack when not in use.
- If gas or smoke is emitted from the battery pack during charging, switch off the power supply and ensure good ventilation.
- Do not charge a damaged battery pack.
- Do not use the charger if it has been subjected to a heavy knock, dropped or otherwise damaged in any way. Have the charger checked and repaired by a qualified person.
- If the supply cord is damaged, it must be replaced by the manufacturer or similarly qualified persons in order to avoid a hazard.
- Be sure the power supply is the same as the voltage given on the rating plate for the charger.
- Allow a hot battery to cool before charging.
- The plug of the charger must match the outlet, never modify the plug in any way. Unmodified plugs and matching outlets will reduce the risk of electric shock.
- Before each use, check the charger, cable and plug for damage. Do not use a defective charger and do not disassemble the charger.

SAFETY INFORMATION

BRUSH CUTTER AND GRASS TRIMMER, ADDITIONAL SAFETY INFORMATION

- Wear personal protective equipment.
- Before starting the product, make sure the cutting attachment is not contacting any objects.
- Thoroughly inspect the area where the machine is to be used and remove all stones, sticks, wires, bones and other foreign objects.
- Avoid operating the product in wet grass or take additional precautions to avoid slipping.
- When operating on a slope, always stand at a lower level than the machine. Never cut or trim on an icy, slippery hill or slope.
- Do not operate the cutting attachment when crossing surfaces other than grass, and when transporting the machine to and from the working area.
- Take care against injury from a cutter fitted for trimming the cutting line length. After extending the cutter line always return the machine to its normal operating position before switching on.
- Do not operate the product with a damaged or excessively worn cutting attachment.
- Do not operate the product with cutting attachments other than provided. Do not use with saw blades or flail blades.
- When operating the device in connection with the nylon line cutting head, the outside protection cover must always be installed to cut the nylon line to its correct length and protect the operator. When the device is used with the brush cutter blade, the outside protection cover should be removed.
- Beware of blade thrust! Machines fitted with blades can be thrown violently to the side when the blade comes into contact with a fixed object. A blade is capable of amputating an arm or leg.

SAFETY INFORMATION

HEDGE TRIMMER, ADDITIONAL SAFETY INFORMATION

- Wear personal protective equipment.
- Before starting the product, make sure the cutting attachment is not contacting any objects.
- Keep all parts of the body away from the cutting blade. Do not remove cut material or hold material to be cut when blades are moving . Make sure the product is switched off when clearing jammed material.
- Carry the product by the handle with the cutting blade stopped. When transporting or storing the product always fit the cutting device cover . Proper handling of the product will reduce possible personal injury from the cutting device.
- Hold the product by insulated gripping surfaces only, because the cutting blade may contact hidden wiring. Cutting blades contacting a “live” wire may make exposed metal parts of the product “live” and could give the operator an electric shock.
- Check the hedge for foreign objects before operation, e.g. wire fences.
- Hold the product properly, e.g. with both hands if two handles are provided. Loss of control can cause personal injury.
- Beware of overhead power lines. Do not use the product in any position that causes any part to come within 10m of overhead electrical lines.
- If the blade becomes jammed by solid objects, switch off the product immediately then remove the object.

POLE PRUNER, ADDITIONAL SAFETY INFORMATION

- Wear personal protective equipment.
- Before starting the product, make sure the cutting attachment is not contacting any objects.
- Do not overwork yourself. Take regular breaks to ensure concentrated work and full control over the product.
- Keep all parts of the body away from the saw chain. Do not remove cut material or hold material to be cut when chain is moving . Make sure the product is switched off when clearing jammed material.

SAFETY INFORMATION

- Hold the product by insulated gripping surfaces only, because the cutting blade may contact hidden wiring. Cutting blades contacting a “live” wire may make exposed metal parts of the product “live” and could give the operator an electric shock.
- Always hold the product with your right hand on the rear handle and your left hand on the front handle. Holding the product with a reverse hand configuration will increase the risk of personal injury and should not be done.
- Do not operate the product in a tree. Operation of a product while up a tree may result in personal injury.
- Always keep proper footing and operate the product only when standing on fixed, secure and level surfaces. Slippery or unstable surfaces such as ladders may cause a loss of balance or control of the product.
- When cutting a limb that is under tension be alert of spring back. When the tension in the wood fibres is released the spring loaded limb may strike the operator and/or throw the product out of control.
- Use extreme caution when cutting brush and saplings. The slender material may catch the saw chain and be whipped toward you or pull you off balance.
- Carry the product by the front handle with the product switched off and away from your body. When transporting or storing the product always fit the guide bar cover.
- Follow the instructions for lubricating, chain tensioning and changing accessories. Improper tensioned or lubricated chain may either break or increase the chance of kickback.
- Keep handles dry, clean and free from oil and grease. Greasy, oily handles are slippery causing loss of control.
- Cut wood only. Do not use the product for purposes not intended. For example, do not use the product for cutting plastic, masonry or non-wood building materials. Use of the product for operations different than intended could result in serious personal injury.
- Pay attention to national and local regulations. National and local regulations may restrict the use of this product .
- Remove branches in sections
- Beware of dangerous operating positions as well as of the risk of being struck by falling branches or by those that rebound after hitting the ground.

SAFETY INFORMATION

- Beware of overhead power lines. Do not use the product in any position that causes any part to come within 10m of overhead electrical lines.
- Never cut in areas where the cutting attachment is out of sight.

CAUSES AND OPERATOR PREVENTION OF KICKBACK

Kickback may occur when the nose or tip of the guide bar touches an object, or when the wood closes in and pinches the saw chain in the cut.

Tip contact in some cases may cause a sudden reverse reaction, kicking the guide bar up and back towards the operator.

Pinching the saw chain along the top of the guide bar may push the guide bar rapidly back towards the operator.

Either of these reactions may cause you to lose control of the saw which could result in serious personal injury. Do not rely exclusively upon the safety devices built into your saw.

As a product user, you should take several steps to keep your cutting jobs free from accident or injury. Kickback is the result of tool misuse and/or incorrect operating procedures or conditions and can be avoided by taking proper precautions as given below:

- Maintain a firm grip, with thumbs and fingers encircling the products handles. Always have both your hands on the products handles and position your body and arm to allow you to resist kickback forces. Kickback forces can be controlled by the operator, if proper precautions are taken. Do not let go of the product.
- Do not overreach. This helps prevent unintended tip contact and enables better control of the product in unexpected situations.
- Only use replacement bars and chains specified by the manufacturer. Incorrect replacement bars and chains may cause chain breakage and/or kickback.
- Follow the manufacturer's sharpening and maintenance instructions for the saw chain. Decreasing the depth gauge height can lead to increased kickback.



Important! Due to the high risk of physical injury to the user, the BATTERY brush cutter is not allowed to be used to clean paths or to chop up tree and hedge clippings. Similarly, the tool must not be used to level out high areas such as molehills. For safety reasons, the BATTERY brush cutter must not be used as a drive unit for other work tools or toolkits of any kind.

VIBRATION AND NOISE REDUCTION

1.To reduce the impact of noise and vibration emission, limit the time of operation, use low-vibration and low-noise operating modes as well as wearing personal protective equipment.

2.Prolonged exposure to vibrations can cause injuries and neurovascular disorders (also called "Renaud's syndrome" or "white hand"), especially to people suffering from circulation disorders. The symptoms can affect the hands, wrists and fingers and are shown through loss of sensitivity, torpor, itching, pain and discolouring of or structural changes to the skin. These effects can be worsened by low ambient temperatures and/or by gripping the handgrips excessively tightly. If the symptoms occur, the length of time the machine is used must be reduced and a doctor consulted.

3.When working with the device, a certain level of noise cannot be avoided. Noisy work should be scheduled for hours, during which it is allowed by statute or other local regulations. Adhere to any applicable rest times and limit your working time to the necessary minimum time. For your personal protection and the protection of people nearby, suitable hearing protection must be worn.

4. Take the following points into account to minimize the vibration and noise exposure risks:

- Only use the product as intended by its design and these instructions.
- Ensure that the product is in good condition and well maintained.
- Use correct application tools for the product and ensure they are in good condition.
- Keep tight grip on the handles/grip surface.
- Maintain this product in accordance with these instructions and keep it well lubricated (where appropriate).
- Plan your work schedule to spread any high vibration tool use across a number of days.

Caution!



Residual risks

Even if you use this electric tool in accordance with the instructions, certain residual risks cannot be eliminated. The following hazards may arise in connection with the electric tool's construction and layout:

- 1.Cut injuries if no safety clothing is used.
- 2.Injury and damage to property caused by catapulted objects.
- 3.Lung damage if no suitable protective dust mask is used.
- 4.Damage to hearing if no suitable ear protection is applied.
- 5.Health damage caused by hand-arm vibrations if the tool is used over a longer period or is not properly guided and maintained.



Warning! This electric tool generates an electromagnetic field during operation. Under certain circumstances this field may actively or passively impede medical implants. To reduce the risk of serious or fatal injuries, we recommend persons with medical implants to consult their doctor and the manufacturer of the medical implant prior to using the tool.

SYMBOLS



Warning



Read the instruction manual



To reduce the risk of injury, user must read instruction manual carefully.



The machine complies with the applicable European directives and an evaluation method of conformity for these directives was done.



Wear ear protection
Wear eye protection
Wear safety helmet!



Gloves with saw protection



Wear safety footwear



Wear protective clothing



To avoid potential electric shock, do not use the unit in humid or wet conditions



Always beware of the danger from overhead electric-power line, keep a safe distance at least 15M from the power line.



Beware of blade thrust: Continued movement of saw blade after cutting through log.



Objects thrown by the product could hit the user or other bystanders. Always ensure that other people and pets remain at a safe distance from the product when it is in operation. In general, children must not come near the area where the product is. Minimum distance 15m.



Maximum rotational frequency of the shaft for the cutting attachment in min^{-1}



Correct direction of cutting-teeth.



Refill chain oil



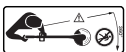
Do not touch the cutting device until it stops completely.



Refill chain oil



Guaranteed sound power level Grass trimmer: 96dB



Keep other people out of working area during operation. A distance of at least 15 m must be observed.



Risk of long hair being drawn into air inlet.



Risk of loose clothing being drawn into air intake.



WEEE symbol. Waste electrical products should not be disposed of with household waste. Please recycle where facilities exist. Check with your Local Authority or local store for recycling advice.



Do not throw into water.



Do not throw on fire.



Do not subject the battery to strong sunlight over long periods of time. Do not leave on a heater (max.45°C).



Batteries contain Li-ion. Do not dispose of waste batteries in domestic waste. Contact local authority to find out how to dispose of batteries.

Li-Ion



The charger is for indoor use only.



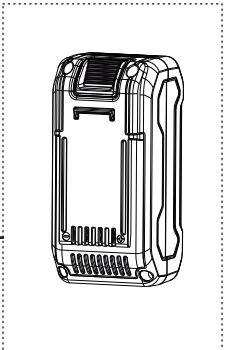
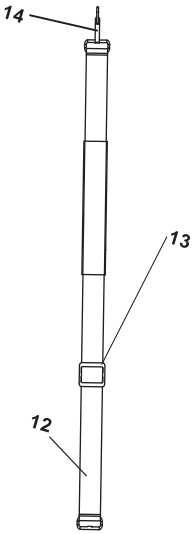
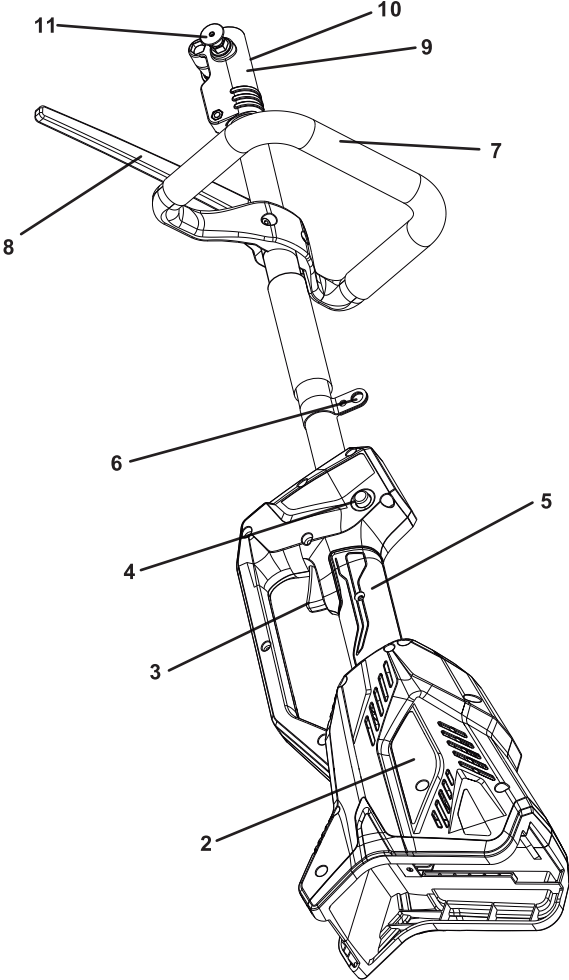
Double insulation.

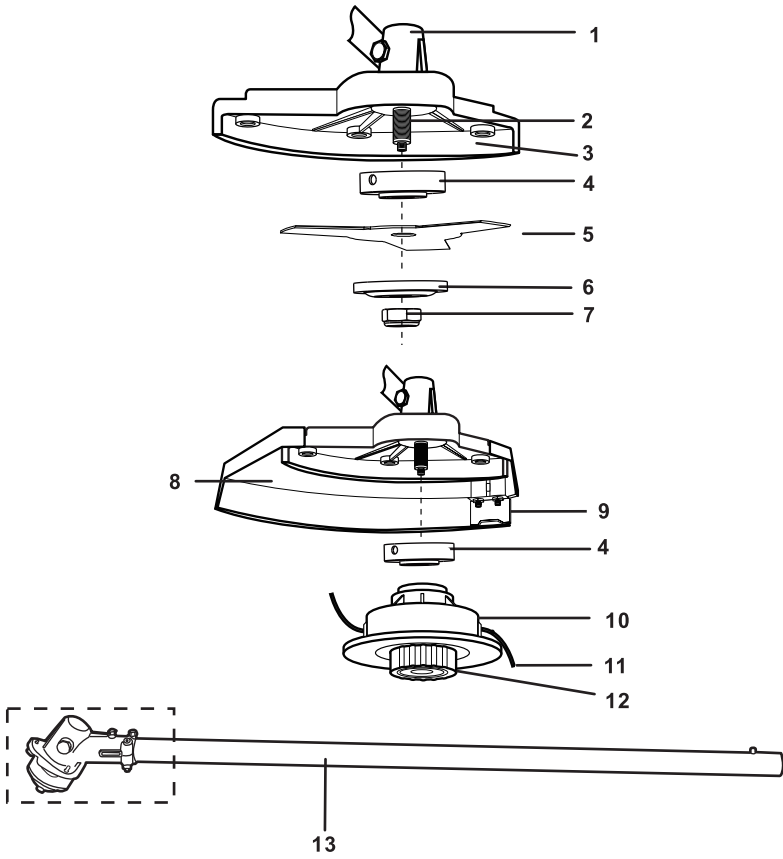
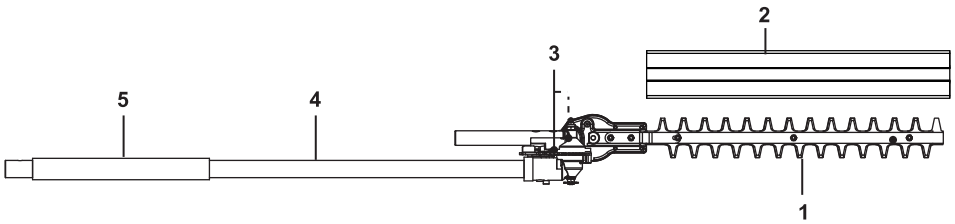


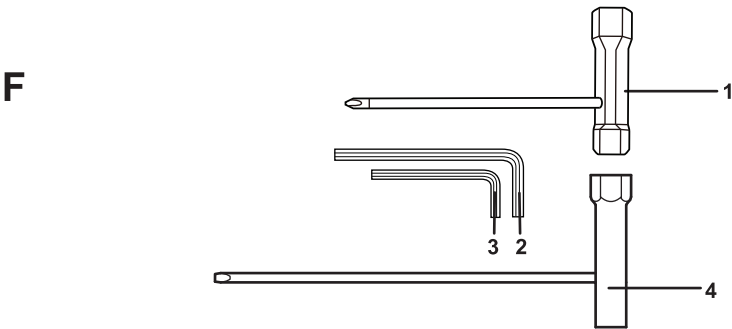
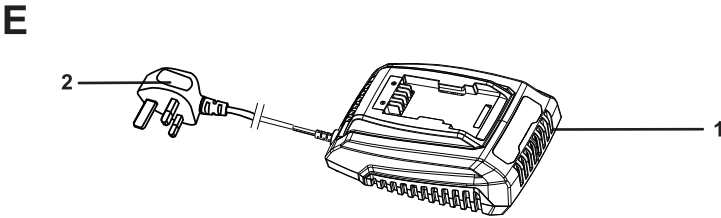
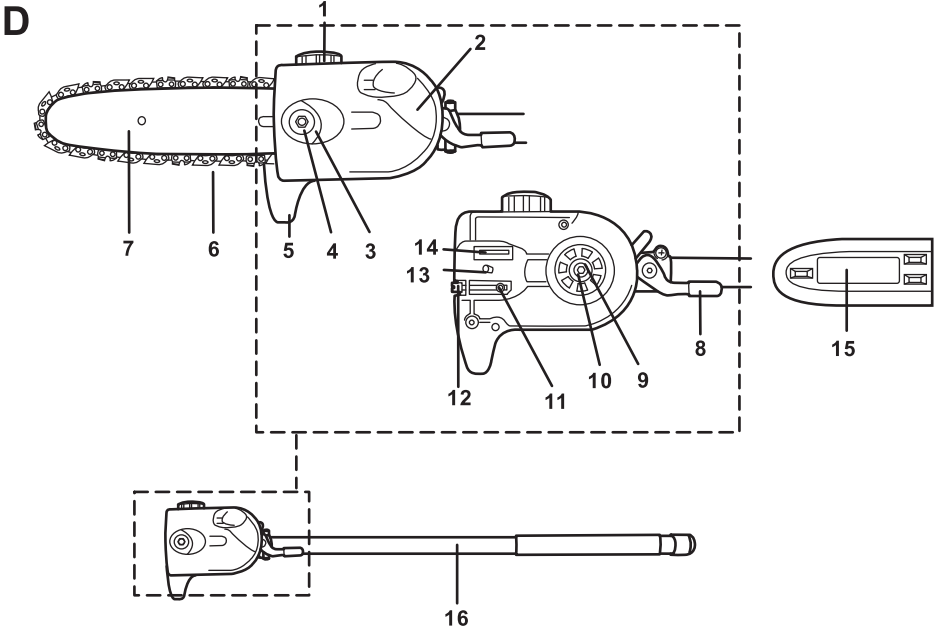
Protective 5A limited

KNOW YOUR PRODUCT

A



B**C**



A. Main unit

-
1. Battery pack
 2. Power head
 3. Variable Speed Trigger
 4. lock-off button
 5. Main handle
 6. Ring for harness
 7. Auxiliary handle
 8. Step guard
 9. Clamp
 10. Locking nut
 11. Locking knob
 12. Harness
 13. Button
 14. Securing clip
 15. Pole extension
-

B. Brush cutter/Grass trimmer

-
1. Gear box
 2. Spindle
 3. Cutting guard
 4. Backing flange
 5. Cutting blade
 6. Locking flange
 7. Safety nut
 8. Trimming guard
 9. Line cutter
 10. Trimmer head
 11. Trimming line
 12. Bumper
 13. Brush cutter/grass trimmer shaft
-

C. Hedge trimmer attachment

-
1. Hedging blade
 2. Blade protection sheath
 3. Unlock levers
 4. Hedge trimmer shaft
 5. Gripping surface
-

D. Pruner attachment

-
1. Chain oil tank cap
 2. Cover
 3. Locking nut
 4. Spring washer
 5. Pivot
 6. Saw Chain
 7. Guide bar
 8. Locking lever
 9. Clutch
 10. Drive sprocket
 11. Tension pin
 12. Tension screw
 13. Bolt
 14. Oiling port
 15. Guide bar cover
 16. Pruner shaft
-

E. Charger

-
1. Charger
 2. Plug
-

F. Tools

-
1. Multi-tool I :cross-head screwdriver/socket wrench
 2. Hex key 5 mm
 3. Hex key 4 mm
 4. Multi tool II: Socket wrench / slotted screw driver
-

TECHNICAL DATA

GENERAL

MODEL: SYMT4B

Voltage	40V --- MAX
No Load Speed	8500/min
Net weight (without cutting attachment and with battery)	approx. 4.4kg

BRUSH CUTTER

Blade Size	3 teeth, Ø230x Ø25.4mm
Maximum rotational frequency of the spindle	6500 /min

Noise values

Sound pressure level $L_{pA,av}$	82 dB(A)
Uncertainty	3 dB(A)
Sound power level $L_{WA,m}$	100.9dB(A)
Uncertainty	2.16dB(A)
Guaranteed sound power level L_{WA}	103 dB(A)

Hand arm vibration

Front handle a_h	4.470 m/s ²
Rear handle a_h	3.720 m/s ²
Uncertainty	1.5 m/s ²

GRASS TRIMMER

Line spool diameter	Ø 2.0mm
Max. cutting width	360 mm
Maximum rotational frequency of the spindle	6000 /min

Noise values

Sound pressure level $L_{pA,av}$	78dB(A)
Uncertainty	3 dB(A)
Sound power level $L_{WA,m}$	94.5dB(A)
Uncertainty	1.88 dB(A)
Guaranteed sound power level L_{WA}	96 dB(A)

Hand arm vibration

Left handle a_h	4.320 m/s ²
Right handle a_h	3.690 m/s ²
Uncertainty	1.5 m/s ²

HEDGE TRIMMER

Max. cutting length	395 mm
Max. cutting capacity	24 mm
No-load speed	1200/min

Adjustable cutting angle range	-90° — +60°
Noise values	
Sound pressure level $L_{pA,av}$	80.3 dB(A)
Uncertainty	3 dB(A)
Sound power level $L_{WA,av}$	97.7 dB(A)
Uncertainty	1.97 dB(A)
Guaranteed sound power level L_{WA}	103 dB(A)
Hand arm vibration	
Front handle a_h	4.470 m/s ²
Rear handle a_h	3.720 m/s ²
Uncertainty	1.5 m/s ²

PRUNER

Chain oil tank	150 ml
Saw chain speed	13 m/s
Max. cutting length	180 mm
Guide bar length	203 mm
Guide bar type	M1500833-1041TL
Saw chain type	CL15033X
Chain pitch	9.525 mm (3/8")
Chain gauge (thickness of drive links)	1.27 mm (0.050")
Drive sprocket (teeth and pitch)	7 teeth x 9.525 mm(3/8")
Noise values	
Sound pressure level $L_{pA,av}$	84.1 dB(A)
Uncertainty	3 dB(A)
Sound power level $L_{WA,av}$	100.6 dB(A)
Uncertainty	2.38 dB(A)
Guaranteed sound power level L_{WA}	103 dB(A)
Hand arm vibration	
Front handle a_h	4.470 m/s ²
Rear handle a_h	3.720 m/s ²
Uncertainty	1,5 m/s ²

CHARGER

Model	SY-CHG-40
Rated Input voltage	100-240V ~ 50-60Hz, 95 W
Rated output voltage	40v 2.0A
Charger time, Battery Pack SY-BAT-404 (approx)	150 mins

BATTERY PACK

Model	SY-BAT-404
Type	Lithium-Ion
Voltage	40V
Capacity	4.0 Ah

Voltage measured without workload. Initial battery voltage reaches maximum of 40 volts.

The declared vibration value has been measured in accordance with a standard test method and may be used for comparing one tool with another.

The declared vibration value may also be used in a preliminary assessment of exposure.



WARNING! The vibration emission value during actual use of the tool can differ from the declared value depending on the ways in which the tool is used. Identify safety measures to protect the operator that are based on an estimation of exposure in the actual conditions of use (taking account of all parts of the operating cycle such as the times when the tool is switched off and when it is running idle in addition to the trigger time).

The sound intensity level for the operator may exceed 85dB(A) and ear protection measures are necessary.

BEFORE ASSEMBLY



WARNING! Read all instructions carefully.



Warning! Always remove the battery before making adjustments to the tool.



Danger! Do not fit the battery until the tool has been fully assembled. When you are working on the tool, always wear protective gloves and use the supplied blade covers to protect yourself against injury.

INTENDED USE

1. This 4 in 1 multi tool has a battery powered electrical motor unit. Depending on the attached accessory in use, it is intended to be used as:

- 1). **Brush Cutter:** With the cutter blade attached the product is intended to cut heavier weeds, brush and similar vegetation.
- 2). **Grass trimmer:** With the line spool attached the product is intended to cut smaller types of weed, lawn grass or similar soft vegetation. It must not be used to work on unusually thick, dry or wet grass, e.g. pasture grass, or to shred leaves.
- 3). **Pole hedge trimmer:** With the hedge trimmer blade attached the product is intended for trimming wide and high hedges, bushes and shrubs.
- 4). **Pole Pruner:** With the saw chain/guide bar assembly attached the product is intended for cutting limbs with a thickness of max. 180 mm. The product may only be used with the guide bar/saw chain combination stated in these instructions. It is not permitted to use other types or sizes.
- 5). The product must not be used for cutting other materials, such as plastic, stone, metal or wood that contains foreign objects and must not be used outside of domestic premises.
- 6). Observe the technical data for the maximum cutting capacity according to the application (see "**Technical data**"). Do not cut plants exceeding the stated maximum capacity.
- 7). This product is intended for private domestic use only, not for any commercial trade use. It must not be used for any purposes other than those described.

UNPACK

1. Unpack all parts and lay them on a flat, stable surface.
2. Remove all packing materials and shipping devices if applicable.
3. Make sure the delivery contents are complete and free of any damage. If you find that parts are missing or show damage, do not use the product and contact the manufacturer. Using an incomplete or damaged product represents a hazard to people and property.
4. Ensure that you have all the accessories and tools needed for assembly and operation. This also includes proper personal protective equipment.

You will need

(items not supplied)

- Suitable personal protection equipment
- Suitable lubricant for hedge cutter
- Suitable Chain Oil

ASSEMBLY INSTRUCTIONS



WARNING! Be careful with small parts that are removed during assembly or when making adjustments. Make sure you do not lose them.

1. AUXILIARY HANDLER ASSEMBLY

1). Loosen the outer pre-assembled screws on the auxiliary handle (A7).

NOTE: There are holes on the bottom side of the upper shaft above the clamp to adjust the position of the handle.

2). Align the step guard (A8) with the screw to one of the holes in the shaft and insert the shorter screw into the hole.

3). Place the handle onto the shaft from the top and secure it with the longer screws. Tighten them with the hex key 4mm (F3). (See Fig. 1)

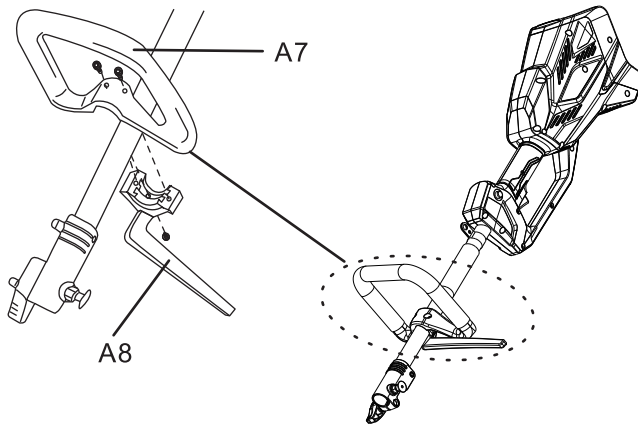


Fig. 1

2. ATTACHMENTS



WARNING! Read all the instructions carefully! Do not start the product until it is completely assembled! Always wear gloves during assembly!

Assemble the relevant attachment to suit the intended application.

NOTE: This product can be used with different cutting heads for different applications. Follow the assembly steps for respective application.

1). Assembling the attachment to the drive shaft tube

- a). Remove the protective cap from the attachment to be used.
- b). Pull out and rotate the locking knob (A10) on the shaft clamp (A9) anticlockwise to stop at the bracket. Insert the shaft tube of the attachment into the upper drive shaft tube (Fig. 2).
- c). Release the locking knob (A10) by turning clockwise. Rotate and slide the upper drive shaft tube inward until the locking knob (A10) snaps into place.
- d) Tighten the locking nut (A11) to secure the connection of the tubes.

NOTE: The extension shaft can only be used with the pole pruner to allow for longer reach. Tighten the attachments together using the shaft clamp, locking knob and locking nut of the extension shaft.

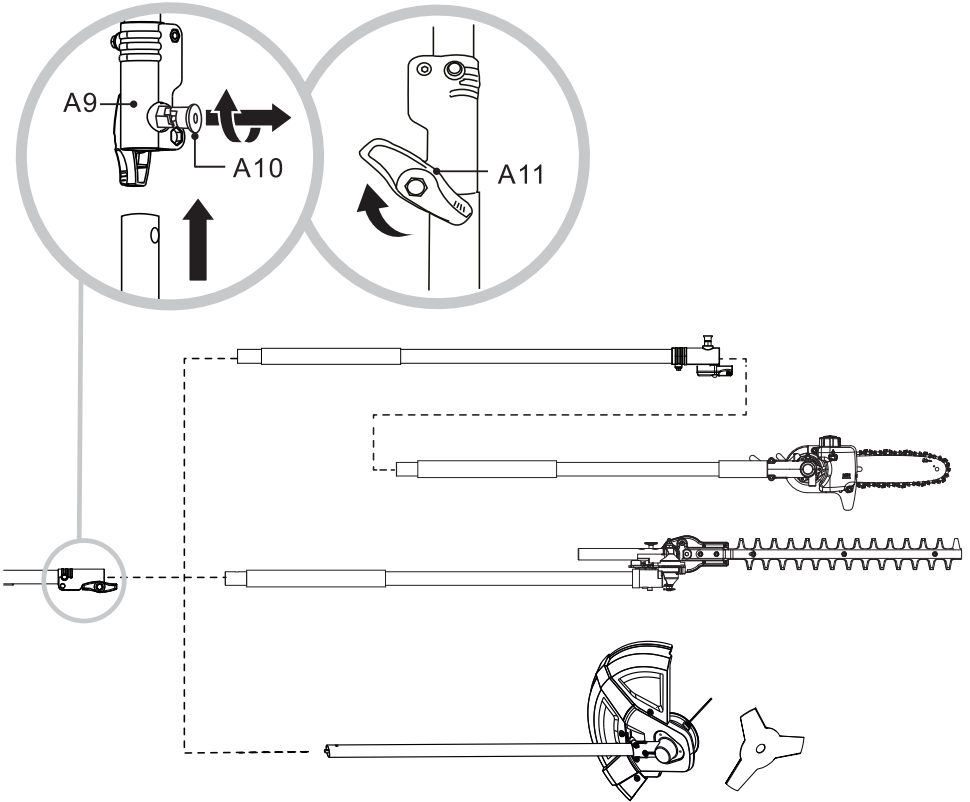


Fig. 2

2). Brush cutter/grass trimmer attachment assembly

Fit the brush cutter/grass trimmer shaft to the main unit. (See Fig. 3)

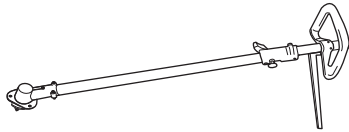


Fig. 3

3). Safety guard assembly

a). Loosen the three pre-assembled screws on the gear head by using the Hex key 4 mm (F3). (See fig.4a)

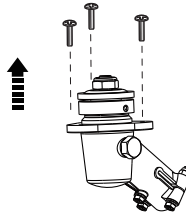


Fig. 4a

- b). Rotate the backing flange (B4) until one of the notches is aligned with the hole in the gear head.
- c). Insert the Hex key 4 mm (F3) into the hole to lock the spindle (B2).
- d). Loosen the safety nut (B7) and take it off together with the locking flange (B6) and backing flange (B4). (See fig.4b)

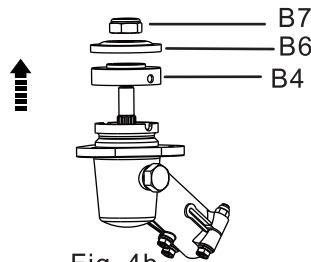


Fig. 4b

e). Place the cutting guard (B3) onto the support and fix it with the screws by using the Hex key 4 mm (F3). Pay attention to the alignment of the cutting guard. (See Fig. 4c)

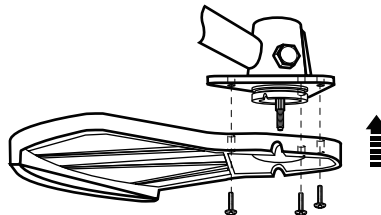


Fig. 4c

f). If you intend to use the product as brush cutter, proceed as per “Brush cutter assembly” below.

g). If you intend to use the product as grass trimmer additionally attach the trimming guard (B8). Fix the trimming guard (B8) and with three fixed bolts by using the hex key 5 mm (F2) (See Fig. 4d). Then proceed as per “Grass trimmer assembly” below.

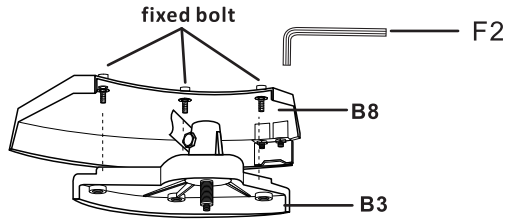


Fig. 4d

4). Brush cutter assembly

- Make sure that the cutting guard (B3) has been attached properly and the screws have been removed from the outer edge.
- Put the backing flange (B4) onto the spindle (B2). Rotate the backing flange (B4) until its hole aligns with the one on the gear head.
- Insert the Hex key 4 mm (F3) into the hole to lock the rotation of the backing flange (B4).
- Fit the blade (B5) to the spindle (B2).
- Put the locking flange (B6) onto the blade (B5).
- Secure the blade (B5) with the safety nut (B7) removed earlier. Using the multi-tool I (F1) tighten the safety nut (B7) anti-clockwise to secure the parts in place. (See Fig. 5)
- Remove the Hex key 4 mm (F3).

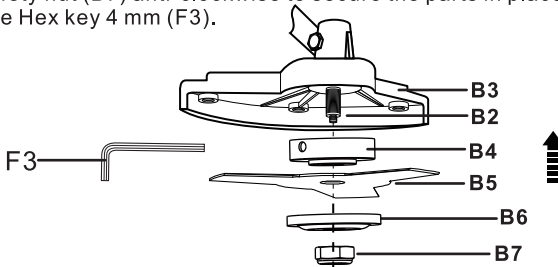


Fig. 5

5). Grass trimmer assembly

- Make sure that the cutting guard (B3) and trimming guard (B8) have been attached properly.
- Put the backing flange (B4) onto the spindle (B2).
- Rotate the backing flange (B4) until its hole aligns with the one on the gear head.
- Insert the Hex key 4 mm (F3) into the hole to lock the spindle.
- Screw the trimmer head (B10) on the spindle (B2) anti-clockwise securely. (See Fig. 6)
- Remove the Hex key 4 mm (F3).



WARNING! Do not attach the locking flange (B6) when using the trimmer head!

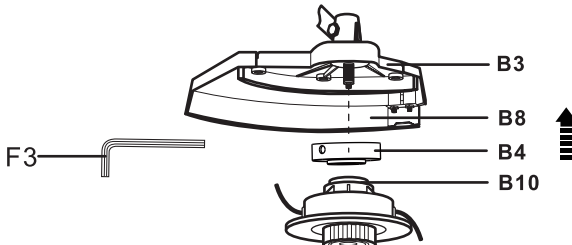


Fig. 6

6). PRUNER ATTACHMENT

Pole extension/Pruner shaft

- a). Fit the pruner shaft (D16) directly to the upper shaft if no pole extension is required.
- b). Fit the pole extension to the upper shaft if required, and then fit the pruner shaft to the pole extension.

Chain and guide bar

- a). Use only the guide bar (D7) and saw chain (D6) according to the technical data of the product.



WARNING! Always use a saw chain designed as “low-kickback” or a saw chain which meets the low-kickback requirements! A standard saw chain (a chain which does not have the kickback reducing guard links) should only be used by an experienced professional operator! Nevertheless, a low-kickback saw chain does not completely eliminated kickback! A low-kickback or “safety” chain should never be regarded as complete protection against injury! The guide bar and chain can only be adjusted, with the engine stopped.

- b). Place the product on a suitable flat surface with the cover (D2) facing upwards.
- c). Loosen locking nut (D3) with the socket wrench (F4) anticlockwise and remove it together with the spring washer (D4) and cover (D2). (See Fig. 7a, 7b)

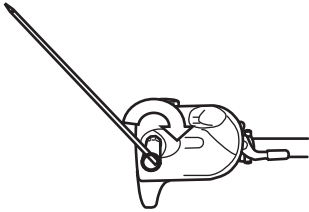


Fig. 7a

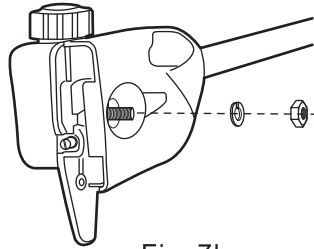


Fig. 7b

- d). Ensure that the tension pin (D11) is adjusted to its far right position. If not, turn the tension screw (D12) anticlockwise with the slotted screwdriver (F4). (See Fig. 7c)

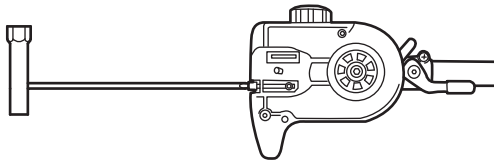


Fig. 7c

- e). Spread the saw chain (D6) around the guide bar (D7). Slide the chain into the groove around the guide bar. Pay attention to the cutting direction.
f). Align the saw chain around the drive sprocket (D10) and place one corner of the guide bar into a gap of the sprocket. (See Fig. 7d)



WARNING! The direction of the saw chain 'cutters' must be as indicated by the arrow on the pruner head!

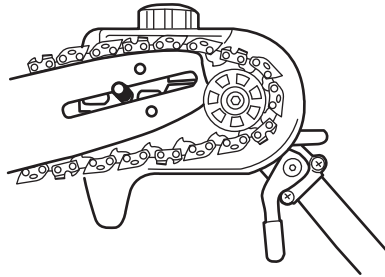


Fig. 7d

- g). Make sure the tension pin (D11) is inserted into the lower hole on the guide bar. (See Fig. 7e)

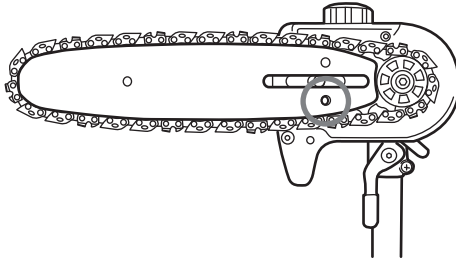


Fig. 7e

- h). Refit the cover (D2), spring washer (D4) and slightly tighten the locking nut (D3). (See Fig. 7f)

NOTE: The saw chain (D6) has not yet been tensioned. Tension the chain as described under "Saw chain tensioning". Check chain tension regularly.

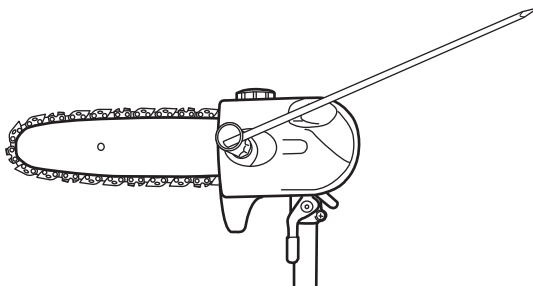


Fig. 7f

Saw chain tensioning

Always check the saw chain tension before use, after first cuts and regularly during use, approx. every five cuts. After initial operation, new chains can lengthen considerably. This is normal during the break-in period and the interval between future adjustments will lengthen quickly.



WARNING! Always switch off the product and disconnect the battery pack before adjusting the saw tension!

The cutting edges of the saw chain are sharp. Always wear protective gloves when handling the chain!

Always maintain proper chain tension! A loose chain increases the risk of kickback! A loose chain may jump out of the guide bar groove! This may injure the operator and damage the chain! A loose chain will cause rapid wear to the chain, guide bar and sprocket!



Tensioning the chain too tightly will overload the engine and cause damage, and insufficient tension can cause chain derailing, whereas a correctly tightened chain provides the best cutting characteristics and prolonged working life! The chain life mainly depends upon sufficient lubrication and correct tensioning!

- a). Lift up the tip of the guide bar (D7) and keep it there as you adjust the tension.
- b). Turn the tension screw (D12) clockwise until the chain "tie straps" are just touching the bottom edge of the guide bar (D7). (See Fig. 8a)

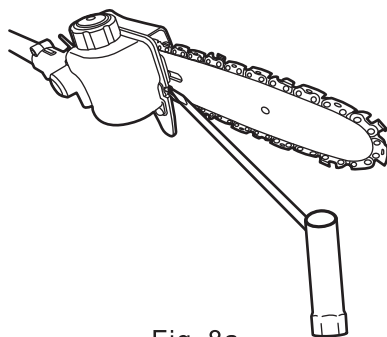


Fig. 8a

c). Check the chain tension using one hand to lift the saw chain (D6) against the weight of the product. The correct chain tension is achieved when the saw chain can be lifted by approx. 2-4mm from the guide bar (D7) in the centre. (See Fig. 8b, 8c)

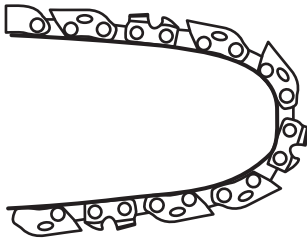


Fig. 8b

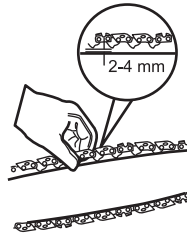


Fig. 8c

d). Turn the locking nut (D3) to tighten the cover (D2) completely.

Chain lubrication Filling



WARNING! The product is not filled with chain oil. It is essential to fill the product with chain oil before using it! Never operate the product without chain oil as this will result in extensive damage to the product!!

Operating the saw chain dry or with too little chain oil will decrease cutting efficiency, shorten the product life span and cause rapid wear to the saw chain and guide bar from overheating! Insufficient chain oil is evident by smoke or bar discoloration! Adequate lubrication of the saw chain during cutting operations is essential to minimise friction with the guide bar!

a). Set the product on any suitable surface with the chain oil tank cap (D1) facing upwards. (See Fig. 9a)

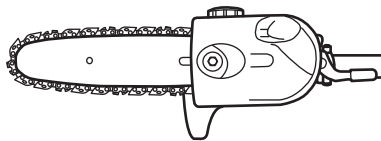


Fig. 9a

b). Unscrew and remove the tank cap (D1), then add the lubricant into the tank.

We recommend using environmentally-friendly chain oil specifically intended to be used with this product.

c). Use a proper funnel with a filter to prevent debris entering the tank and to avoid spilling and overfilling the tank. Do not overfill and leave approximately 5 mm of space to the lower edge to allow the lubricant to expand. (See Fig. 9b)

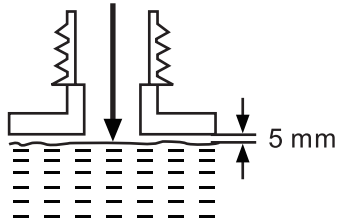


Fig. 9b

d). Wipe up spilled fuel with a soft cloth and refit the chain oil tank cap (D1).

NOTE: Always dispose of lubricant, used oil and objects contaminated with them in accordance with local regulations.

Checking

Check the chain lubrication before each use.

NOTE: This product is equipped with an automatic oiling system! The oiling system automatically delivers the proper amount of oil to the bar and chain!

Checking the lubrication requires starting the engine. Before checking the product must be fully assembled and all instructions must have been read.

a). Make sure the guide bar (D7) and the saw chain (D6) are in place when you check the oil delivery.

b). Start the engine; keep it running at medium power and check if the chain oil is delivered as shown in the figure. (See Fig. 9c)

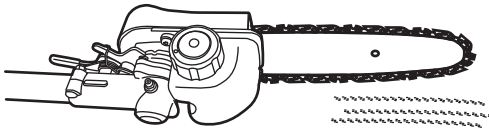


Fig. 9c

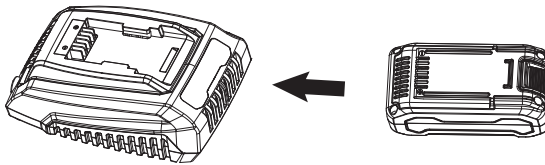
BEFORE OPERATION



WARNING: The charger and battery pack are specially designed to work together so do not attempt to use any other devices. Never insert or allow metallic objects into your charger or battery pack connections otherwise an electrical failure and hazard will occur.

NOTE: The battery pack comes partly charged. Charge the battery pack prior to first use, ideally at least 60 minutes.

- Always pull the plug of the charger from the mains before removing or connecting the battery pack to the charger.
- Never charge the battery pack when the ambient temperature is below 5°C or above 45°C.
- Never recharge a battery pack again immediately after rapid charging. This could overcharge the battery pack, thus reducing the lifespan of the battery pack and charger.
- Rest the charger for at least 15 minutes between continuously charging sessions.

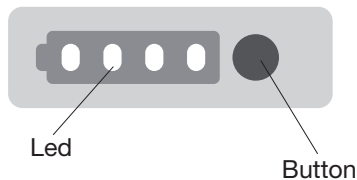


Checking battery capacity

Press the battery capacity level button to check the charging level of the battery pack. The status/remaining capacity will be shown on the battery charging level indication light.

4 Green LED on	Battery pack fully charged
3 Green LED on	Battery pack 75% charged
2 Green LED on	Battery pack 50% charged
1 Green LED on	Battery pack 25% charged
No LED lit	Battery is dead and needs to be charged

Charge the battery pack before operating when it is at medium or low battery charging level.



Charging procedure

- 1) Slide the battery pack into the charger base to make connections.
- 2) Connect the battery charger to the power supply. The indicator light will be green and flash to show that the charging has started.
- 3) When charging is completed, the light will be continuous lit, the pack is now fully charged, unplug the charger and remove the battery pack.

Charging light indicator

Red LED on, Green LED off	Charger ready
Red LED off, Green LED flashes	Battery pack charging
Red LED off, Green LED on	Battery pack fully charged
Red LED flashes, Green LED flashes	Battery pack defected
Red LED flashes, Green LED off	Battery pack too cold or hot



WARNING: When battery pack runs out after continuous use or exposure to direct sunlight or heat, allow time for the pack to cool down before re-charging to achieve the full capacity.

To obtain the best life from the battery

1. Never allow the battery to completely discharge before recharging. The battery pack should be placed on the charger whenever the battery pack is noticeably running down or the tool no longer performs a task it previously performed.
2. Avoid conducting short charges. Make sure that the battery is fully charged each time by allowing the charger to complete its full charging cycle.
3. Avoid allowing loose items like screws or nails etc. to be stored with battery packs as these or similar items can short battery packs and cause a fire or explosion
4. Always unplug the charger when not in use and store in a dry and secure place.
5. Avoid charging or storing your battery in temperatures below 5°C and above 45°C.
6. After use, allow the battery pack to cool down for approximately 30 minutes before attempting to recharge.

OPERATION INSTRUCTIONS

CHECK BEFORE STARTING

1. Check the product, as well as accessories for damage before each use. Do not use the product if it is damaged or shows wear.
2. Double check that accessories and the attachment are properly fixed.
3. Always hold the product by its handles. Keep the handles dry and clean to ensure proper grip.
4. Ensure that the ventilation openings are unobstructed and clear. Clean them if necessary with a soft brush. Blocked ventilation openings may lead to overheating and damage the product.
5. Wear correct personal protection equipment to protect yourself.
6. Ensure the area to be worked is clear of stones, sticks, wires, electrical lines etc. or other objects that could damage the tool.
7. Turn off the product immediately if you are disturbed while working by other people entering the working area. Always let the product come to complete stop before putting it down.
8. Do not overwork yourself. Take regular breaks to ensure you can concentrate on the work and have full control over the product.
9. Understand the purpose and use of all safety equipment, including the harness.

OPERATION INSTRUCTIONS

HARNESS

The harness (A12) helps the operator carry this product.



WARNING! Always attach the product to the harness. Do not carry it just by hand!

- 1). To remove the harness from the loop, open the securing clip (A14).
- 2). Put the strap on; the strap must lead over your right shoulder . (See Fig. 10)

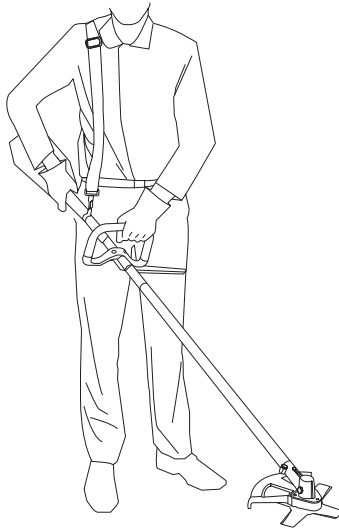


Fig. 10

- 3). Adjust the length of the harness (A12) so that the hook is approximately 15 cm below your waist; locate the product to the harness by using the securing clip ensuring that the angle of the cutting head is parallel to the surface being cut.



WARNING! Always attach the product to the harness. Do not carry it only with your hands.

OPERATION



WARNING! Do not allow familiarity with this product to make you careless. Remember that a careless fraction of a second is sufficient to inflict serious injury.



WARNING! Always wear eye protection and other appropriate personal protective equipment (PPE). Failure to do so could result in serious injury.



WARNING! Do not use any attachments or accessories not recommended by the manufacturer of this product. The use of attachments or accessories not recommended can result in serious personal injury.



WARNING! NEVER OPERATE THE POWER HEAD WITHOUT AN ATTACHMENT.

1).INSTALLING/REMOVING THE BATTERY PAC TO PACK

NOTE: Fully charge the battery pack before first use.

To Install

Align the battery ribs with the mounting slots and press the battery pack down until you hear a “click” (see Fig. 11).

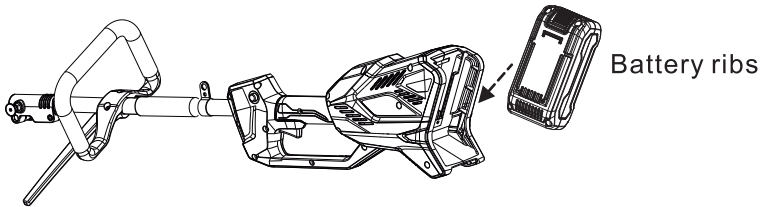


Fig.11

To Remove

Depress the battery-release button and pull the battery pack out.



WARNING! To avoid serious personal injury, always remove the battery pack and keep hands clear of the lock-off button and trigger when carrying or transporting the tool.

2).STARTING/STOPPING THE POWER HEAD

To Start

Press down the lock-off button(A4) and hold it in that position. Depress the trigger(A3) to turn on the power head. Different pressure on the trigger(A3) results in variable rotating speed of the power head. More pressure, higher speed.(see Fig. 12)

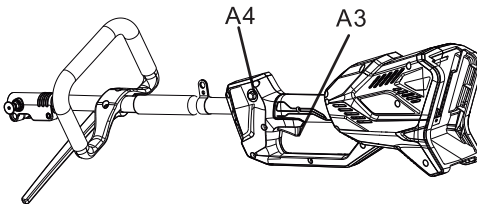


Fig.12

To Stop

Release the trigger.(A3)

NOTICE: The motor runs only when the lock-off button and trigger are both pressed.

BRUSH CUTTER



WARNING! Avoid contact with stones, wire, glass etc. that may cause injury to the user! Inspect the blade regularly for damage, cracks or breaks! Always replace a damaged blade!



WARNING! When working with the cutter blade there is always a risk of kickback if the cutting head comes into contact with a hard object! Kickback will cause the sudden stalling of the cutting head, which in turn results in the cutting head being forced in the opposite direction to the rotation of the cutter blade! Ensure that you retain a firm grip with both hands at any sign of such kickback, pay attention and retain a firm stance to avoid injuries!

- 1). Use the cutter blade (B5) to cut heavier weeds, brush and similar vegetation
- 2). Hold the product firmly so that it sits with a gap between the product and your right side.
- 3). Stand upright, do not lean forward and pay attention to posture. Keep both feet apart to help retain your balance.
- 4). Never hold the cutting head higher than your hip; the higher you hold the cutting head will increase the risk of objects being thrown. (See Fig. 13)

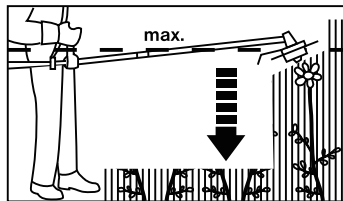


Fig. 13

- 5). Carefully plunge the blade from above when cutting long undergrowth.
- 6). Move the cutting head towards the base of young trees or thicker vegetation.

GRASS TRIMMER

- 1). Use the trimmer head (B10) to cut smaller types of weed, lawn grass or similar soft vegetation.
 - 2). Remove the protection cap from the line cutter (B11).
 - 3). Hold the product firmly so that it sits with a gap between the product and your right side.
 - 4). Stand upright, do not lean forward and pay attention to posture. Keep both feet apart to help retain your balance.
 - 5). Hold the trimmer head just above the ground at an angle of approximately 30°.
- (See Fig. 14a)

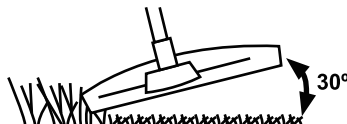


Fig. 14a

6). Move the product with slow and regular arc from left to right before moving it back to the starting position before trimming the next area. (See Fig. 14b)

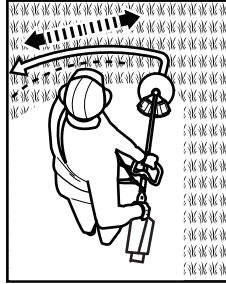


Fig. 14b

7). Ensure the cutting head remains clean and free from off-cuts that may cause it to jam.
8). Trim longer grass in stages, do not cut long grass in one cut. For the best results, cut longer grass in steps. (See Fig.14c, 14d)

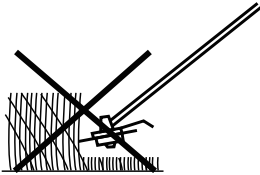


Fig. 14c

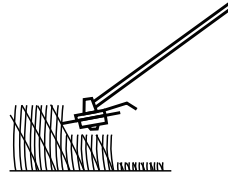


Fig. 14d

9). The trimmer head is equipped with a bumper (B12) helping to cut the trimming line (B11) while operating. Simply tap the bumper on a firm surface and the spool will release fresh trimming line. (See Fig. 14e)

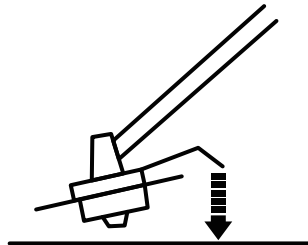


Fig. 14e

10). A line cutter (B9) is integrated with the trimming guard (B8) and this will cut the line to the necessary length. (See Fig. 14f)



WARNING! The cut line will be thrown out! Danger of injury especially for bystanders!

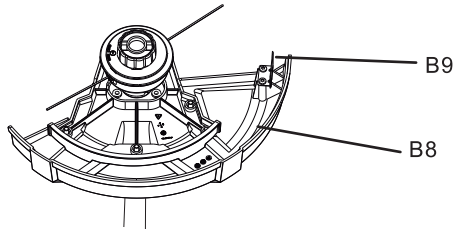


Fig. 14f

11). For best results, do not cut wet grass because it tends to stick to the cutting heads and guard, prevents proper discharge of grass trimmings, and could cause you to slip and fall.

12). Pay special attention when performing the work close to trees and bushes. The cutting heads could damage sensitive bark, and damage fence posts. (See Fig. 14g)

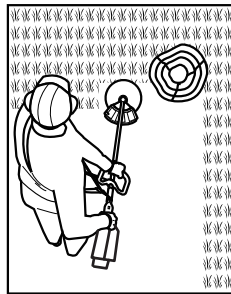


Fig. 14g

HEDGE TRIMMER

1). Angle adjustment

Adjust the attachment angle to fit the growth of the plant.

a). Depress the unlock levers (C3) with one hand and hold them in position. (See Fig. 15a)

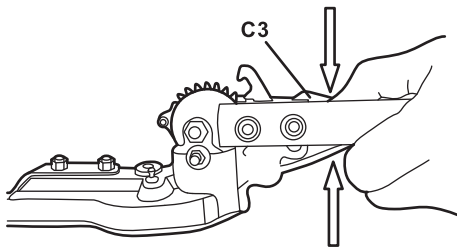


Fig. 15a

b). Move the hedge trimmer shaft (C4) with the other hand until the desired angle is adjusted. (See Fig. 15b)

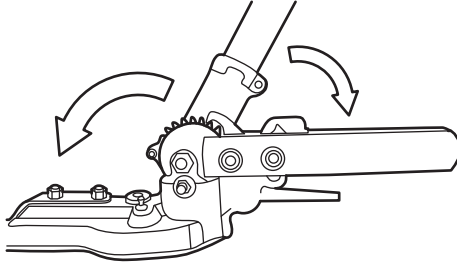


Fig. 15b

d). Release the unlock levers (C3) when the desired angle is adjusted. Ensure that the hook engages between two teeth of the tooth wheel. (See Fig. 15c)

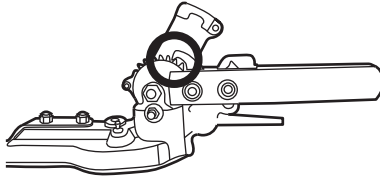


Fig. 15c

2). Trimming

- a). Cut and remove branches exceeding the cutting capacity of this product using a proper pruner before operation.
- b). Always hold the product firmly with both hands on gripping surface and handle grip (A17). Never operate this product using only one hand.
- c). Cut both sides from the bottom cutting upwards to the top. This will prevent any of the cuttings falling into the path of the area still to be cut. (See Fig. 21a)



Fig.21a

- d). After cutting the sides proceed to the top.
e). When cutting wide hedges with the cutting area in sight move the cutting blade lightly through the cutting surface in a sweeping motion following the shape of the hedge or shrub. A slight tilt downwards of the cutting blade in the direction of motion is recommended for optimum cutting performance. (See Fig. 21b)



Fig. 21b

- f). Move the product with slow motion forward when cutting higher hedge and the cutting area out of sight. (See Fig. 21c)



Fig. 21c

- g). Do not to rush and do not attempt to cut too much with one stroke of the cutting blade.
NOTE: Try to keep the cutting blade angled at approximately 15° to the cutting surface.
h). Cut in a number of stages if the area being cut is particularly long to achieve a better result; smaller cuttings will allow for easy composting.
NOTE: When shaping it is advisable to achieve a trapezoidal shape (See Fig. 21d). A trapezoidal cut corresponds to the natural growth of plants and results in optimal hedge growth, as it will expose more light to the bottom of the hedge.

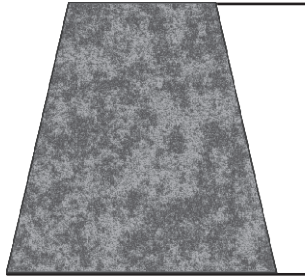


Fig. 21d

PRUNING

1). Angle adjustment

Adjust the attachment angle continuously to fit the growth of the plant.

a). Press the locking lever (D8) downward and hold it in position. (See Fig. 22a)

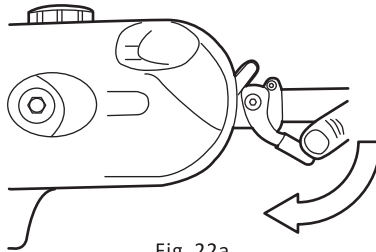


Fig. 22a

b). Adjust the pruner head to required position and then release the locking lever (D8).
(See Fig. 17b)



WARNING! Ensure the locking lever returns to its initial position! To test if the unlock lever is properly engaged try to move the pruner head! It may not be possible to adjust the angle!

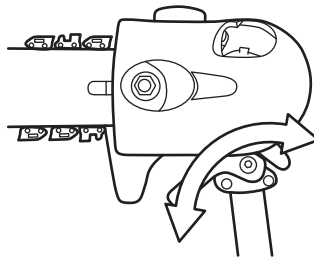


Fig. 17b

2). Kickback



WARNING! Beware of kickback! Kickback can lead to dangerous loss of control of the product and result in serious or fatal injury to the operator or anyone standing close by! Always be alert because rotational kickback and pinch kickback are major product operational dangers and the leading cause of most accidents!

- a). Kickback is the sudden backward/upward motion of the product, occurring when the chain (at the tip of the chain bar) comes in contact with a log or wood, or when the chain becomes jammed.
- b). When kickback occurs the product reacts unpredictably and can cause severe injuries to the operator or bystanders.
- c). With a basic understanding of 'kickback', the element of surprise can be reduced or eliminated. Sudden surprise contributes to the majority of accidents.
- d). You should read all the safety warnings and user instructions carefully before attempting to operate this product.

To avoid kickback:

- Never work with a loose, overstretched or worn out chain
- Ensure chain is sharpened correctly
- Never work with the tip of the guide bar
- Always hold the tool firmly with both hands
- Always use a low kickback chain
- Ensure correct chain tension

3). Pruning

- a). Always hold the product firmly with both hands on gripping surface, and use the harness (A8) . Never operate this product using only one hand. (See Fig. 18a)



Fig. 18a

- b). Maintain a firm grip with your thumbs and fingers encircling the handles. A firm grip will help you reduce 'kickback' and maintain control of the product.
- c). Always hold the product at an angle of not more than 60° from the horizontal level. Otherwise safe operation is not possible. (See Fig. 18b)

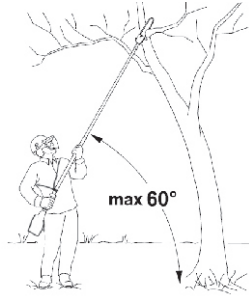


Fig. 18b

- d). Never stand directly under the limb you are sawing. Objects may fall different than expected. Always position yourself out of the path of falling limbs. (See Fig. 18c)
- e). Keep other persons away from cutting end of product and at a safe distance from the work area. Maintain a minimum distance of 10m to bystanders. (See Fig. 18d)



WARNING! Never climb into a tree to prune! Do not stand on ladders, platforms, logs, or in any position which may cause you to lose your balance or control of the product! When pruning trees, it is important not to make the flush cut next to main limb or trunk until you have cut off the limb further out to reduce the weight! This prevents stripping the bark from the main member!

- f). Never stand on a ladder or other type of unstable support while using the product. Insecure stand invites hazards. (See Fig. 18e)



WARNING! This product has not been designed to provide protection from electric shock in the event of contact with overhead electric lines! Therefore do not use product near cable, electric power or telephone lines. Keep a minimum distance of 10 m to all electric lines. (See Fig. 18f)!



Fig. 18c



Fig. 18d



Fig. 18e

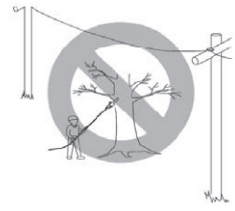


Fig. 18f

- g). Use the product only with secure footing. Hold the product at the right-hand side of your body.
- h). Do not operate the product with arms fully extended or attempt to cut areas which are difficult to reach.
- i). Keep a firm, steady pressure on the product while working with it. Do not try to force the product through the wood, let the cutting device do the work, using the gripping teeth to apply minimal leverage pressure.
- j). Beware when reaching the end of the cut. The weight of the product may change unexpectedly as it cuts free from the wood. Accidents can occur to the legs and feet. Always remove the product from a wood cut while it is running.

NOTE: The chain must be running at full speed before it comes into contact with the wood.

4). Cut thin branches

Thin branches can be cut off with one single cut. To prevent the branch from slivering and buckling the branch should be cut off in several pieces. (See Fig. 19)



Fig. 19

5). Cut thick branches

When cutting larger branches, three cuts are necessary as shown below:

NOTE: Remove the branches lying on the floor regularly to avoid stumbling hazards. Check the oil level regularly and fill up if necessary. Switch the power off and disconnect from power source when leaving the product.

- a). First cut into the branch from below, outside of the location where you intend to cut off the branch. The cut should go one third to halfway through the branch. (See Fig. 20a)
- b). Cut into the branch from the top, outside from where the branch is to be sawn. (See Fig. 20b)
- c). Last, cut off the stump with one clean cut from top to bottom. (See Fig. 20c)



Fig. 20a



Fig. 20b



Fig. 20c

d). You might want to seal the cut with a suitable compound.

NOTE: Remove the branches lying on the floor regularly to avoid stumbling hazards. Check the oil level regularly and fill up if necessary. Switch the power off and remove the battery pack when leaving the product.

MAINTENANCE & STORAGE



WARNING! Before inspecting, cleaning or servicing the unit, stop the motor, wait for all moving parts to stop, and remove the battery pack. Failure to follow these instructions can result in serious personal injury or property damage.



WARNING! Only perform repairs and maintenance work according to these instructions! All further works must be performed by a qualified specialist!



WARNING! Wear safety gloves when working on the attachment heads and close to it! Use appropriate tools to remove debris, e.g. a brush or wooden stick! Never use your bare hands!

Keep the product clean. Remove debris from it after each use and before storage. Regular and proper cleaning will help ensure safe use and prolong the life of the product. Inspect the product before each use for worn and damaged parts. Do not operate it if you find broken and worn parts.

GENERAL CLEANING

NOTE: Do not use chemical, alkaline, abrasive or other aggressive detergents or disinfectants to clean this product as they might be harmful to its surfaces.

1. Clean the product with a slightly damp cloth and mild soap. Use a brush for areas that are hard to reach.
2. In particular clean the air vents after every use with a cloth and brush.
3. Remove stubborn dirt with high pressure air (max. 3 bar).
4. Check for worn or damaged parts. Replace worn parts as necessary or contact an authorised service centre for repair before using the product again.

BLADE (BRUSH CUTTER)

1. Keep the cutting blade (B5) clean and free of debris. Remove clippings.
2. Keep the cutting blade (B5) sharp to retain a good cutting performance. Replace a worn or damaged cutting blade with a new one of the same type.

TRIMMER HEAD

1. Keep the trimmer head (B10) clean and free of debris. Remove trimmings.
2. If the line is used up the spool must either be replaced by one of the same type or the trimming line (B11) must be refilled.
3. To refill the trimming line lay the product on a flat stable surface with its trimmer head facing upwards.
4. Rotate the backing flange until one of the notches is aligned with the hole in the gear head.
5. Insert the Hex key 4 mm (F3) into the hole to lock the spindle.
6. Remove the trimmer head (B10) by unscrewing clockwise. (See Fig. 21a)

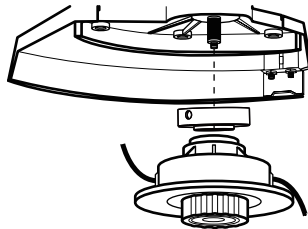


Fig. 21a

7. To replace the spool simply remove from the trimmer head (B10) and replace with a new one of the same type. (See Fig. 21b)

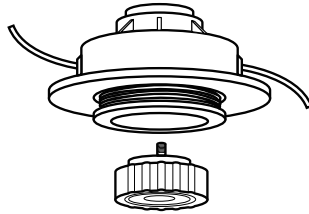


Fig. 21b

8. To replace the trimming line, press the release latch of the trimmer head housing to open the cover.

9. Cut a new 6 m long trimming line with a diameter of 2.0 mm. Form a loop at the middle of the line and insert this loop into the hook on the spool. (See Fig. 21c)

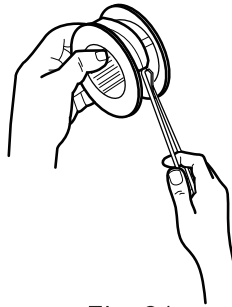


Fig. 21c

10. Wind the two parts of the trimming line in clockwise direction firmly around the spool each part in the guide on the spool. (See Fig. 21d)

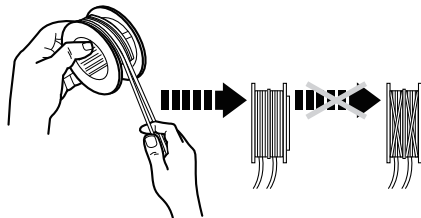


Fig. 21d

11. Insert each end of the threads in the respective holes. The threads should stick out 150 mm on each side.
12. Screw the bumper (B12) anti-clockwise until it is completely and safely locked.
13. Remove the Hex key 4 mm (F3).



WARNING! After changing the trimming line, run the product under no load for at least a minute to make sure that the line and the product are operating correctly!



WARNING! Never use steel thread! Always use cutting means in perfect condition, free of damage!

BLADE (HEDGE TRIMMER)

1. Keep the hedging blade (C1) clean and free of debris. Remove trimmings.
2. Keep the hedging blade (C1) sharp to retain a good cutting performance. Replace a worn or damaged cutting blade with a new one of the same type.
3. Lubricate the hedging blade (C1) after each use to prolong the life span of cutting blade and product. Apply light machine oil along the edge of the cutting blade.

GUIDE BAR AND SAW CHAIN MAINTENANCE

1. GUIDE BAR

Most guide bar problems can be prevented merely by keeping the product well maintained. Incorrect filling and non-standard cutter and depth gauge settings are the causes of most guide bar problems, primarily resulting in uneven bar wear. As the bar wears unevenly, the rails widen, which may cause the chain to clatter and make it difficult to complete straight cuts. If the guide bar is insufficiently lubricated and the product is operated with a saw chain which is too tight, this will contribute to rapid bar wear. To help minimise bar wear, maintenance of the guide bar as well as the saw chain is recommended.

- 1). Disassemble the guide bar and saw chain in reversed order from assembly.
- 2). Check the oiling port (D14) for clogging and clean if necessary to ensure proper lubrication of the guide bar and saw chain during operation. Use a soft wire small enough to insert into the oil discharge hole. (See Fig. 22a)

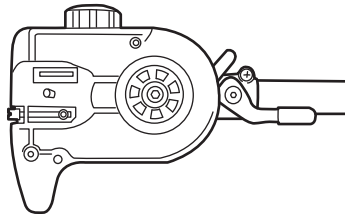


Fig. 22a

NOTE: The condition of the oil passages can be easily checked. If the passages are clear, the chain will automatically give off a spray of oil within seconds of the product starting. Your product is equipped with an automatic oiling system.

- 3). Check the drive sprocket (D10). If it is worn or damaged due to strain, have it replaced by an authorised service agent.
- 4). Clear residue from the rails on the guide bar (D7) using a screwdriver, putty knife, wire brush or other similar tool. This will keep the oil passages open to provide proper lubrication to the guide bar (D7) and saw chain (D6). (See Fig. 22b)



Fig. 22b

5). Check the guide bar 'rail' for wear: Hold a ruler (straight edge) against the side of the guide bar and 'cutter side plates'. If there is a gap between the ruler and guide bar the guide bar 'rail' is normal. If there is no gap (ruler flush against the side of the guide bar) the guide bar 'rail' is worn and needs to be replaced with a new one of the same type. (See Fig. 22c)

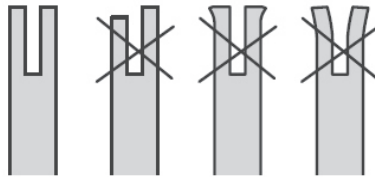


Fig. 22c

- 6). Turn the guide bar 180° to allow even wear, thereby extending the life span of the guide bar (D7).
- 7). Check the saw chain for possible wear and damages. Replace it with a new one if required. Experienced user can sharpen a dull saw chain (see section “**Saw chain sharpening**” below).
- 8). Refit the saw chain (D6) and the guide bar (D7) as described under “**Assembly**”.

2.SAW CHAIN SHARPENING



WARNING! Only sharpen the saw chain yourself if you are trained and have experience! Use proper tools to sharpen the saw chain!

NOTE: Never saw with a blunt chain. The saw chain is blunt if you have to push the product into the tree and the chips are very small.

1). Have the saw chain (D6) sharpened professionally at an authorised service centre or sharpen the chain yourself by using a suitable sharpening kit. Also observe the sharpening instructions supplied with the sharpener kit.

2). The height difference between the tooth and the ridge is the cutting depth. When sharpening the saw chain (D6) you have to consider the following points. (See Fig. 23a)

- File angle
- Cutting angle
- File position
- Diameter of round file
- File depth

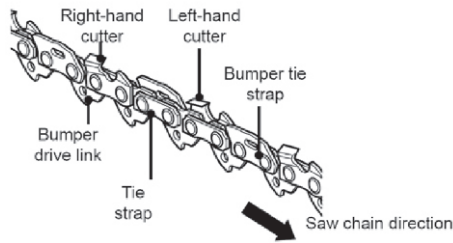


Fig. 23a

3). To sharpen the chain proceed as follows:

- Use protective gloves.
- Ensure the chain is correctly tensioned.
- Engage the chain brake to lock the chain on the bar.

4). Use a suitable file, whose diameter is 1.1 times the cutting tooth depth. Make sure 20% of the file diameter is above the cutter's top plate.

5). A file guide is available from most reputable tool merchants and is the easiest way to hold the file at the correct position.

6). File at an angle perpendicular to the bar, and at an angle of 25° to the direction of travel. (See Fig. 23b)

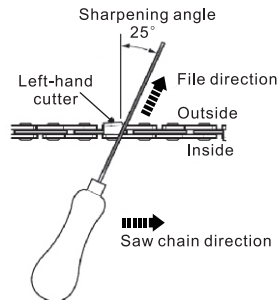


Fig. 23b

- 7). File each tooth from the inside towards outside only. File one side of the chain first than turn the saw around and repeat the process.
- 8). Sharpen each tooth equally by using the same number of strokes.
- 9). Keep all cutter lengths equal. Check the safety depth gauge height every 5 sharpenings. If the depth gauges are also trimmed it is essential that the original profile be restored.
- 10). Use a depth gauge measuring instrument to check the height of the depth gauge. Depth gauge measuring jigs are available from most reputable tool merchants. (See Fig. 28c)

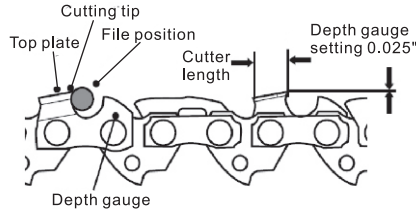


Fig. 28c

CLEANING THE POWER HEAD

1. Stop the motor and remove the battery pack.
 2. Clean dirt and debris from the power head using a damp cloth with a mild detergent.
- NOTICE:** Do not use any strong detergents on the plastic housing or the handle. They can be damaged by certain aromatic oils such as pine and lemon.

STORAGE

1. Switch product off and remove battery pack.
2. Clean the product as described in this manual.
3. Store the product and its accessories in a dry, frost-free, well-ventilated place. The ideal storage temperature is between 10 and 30 C.
4. Always store the product in a place that is inaccessible to children.
5. We recommend using the original package for storage or covering the product with a proper cloth or enclosure to protect it against dust.
6. Empty oil tank if your not going to use the product for an extended period of time (more than 30 days) and before storing it for winter.
7. Charge the battery pack before any long term storage

TRANSPORTATION

1. Remove the battery pack from the power head before transporting it anywhere.
2. Attach transportation guards for cutting means of hedge trimmer, brush cutter and pruner.
3. Always carry the product by its handles.
4. Protect the product from any heavy impact or strong vibrations which may occur during transportation in vehicles.
5. Secure the product to prevent it from slipping or falling over.

RECYCLING AND DISPOSAL



Waste electrical products should not be disposed of with household waste. Please recycle where facilities exist. Check with your local authority or manufacturer for recycling advice.

TROUBLESHOOTING



WARNING! Suspected malfunctions are often due to causes that the user can fix themselves. Therefore check the product using this section. In most cases the problem can be solved quickly.



WARNING! Only perform the steps described within these instructions! All further inspection, maintenance and repair work must be performed by an authorised service centre or a similarly qualified specialist if you cannot solve the problem yourself!

Problem	Possible cause	Fault correction
Fails to start.	The battery pack is not attached to the power head.	Attach the battery pack to the power head.
	No electrical contact between the power head and the battery pack.	Remove battery, check contacts and reinstall the battery pack until it snaps into place.
	The battery pack is depleted.	Charge the battery pack with chargers listed in this manual.
	The lock-off lever and trigger are not depressed simultaneously.	Press down the lock-off lever and hold it, then depress the trigger to turn on the product.
Stops while cutting.	The motor is overloaded.	The motor will recover when the load is removed. For continuous working, decrease the load on the power head.
	The battery pack or the power head is too hot.	Allow the battery pack or the power head to cool until the temperature drops below 67° C.
	The battery pack is disconnected from the tool.	Re-install the battery pack.
	Cutting device is blocked	Remove blockage
Unsatisfactory cutting performance	Cutting blade is dull/damaged	Have a specialist to sharpen or replace it
	Cutting material exceeds capacity	Only cut materials acc. to the capacity of the product
Excessive vibration/noise	Cutting device is dull/damaged	Replace with a new one
	Bolts/nuts are loosen	Tighten bolts/nuts

GUARANTEE

We take special care to provide high quality, durable products. This product has a manufacturer guarantee of 2 years from the date of purchase. This guarantee is in addition to and does not affect your statutory rights.

The guarantee covers product failures and malfunctions provided the product was used for the purpose it is intended and subject to installation, cleaning, care and maintenance in accordance with the information contained in these terms of conditions, in the user manual and standard practice, provided the standard practice does not conflict with the manual.

The product warranty is subject to the following conditions:

- The guarantee becomes effective at the date of purchase (or the date of delivery if this is later)
- Please retain your receipt or delivery note. You must be able to provide a valid proof of purchase showing the product purchased, date of purchase and retailer purchased from.
- The repair or replacement of your machine under guarantee will not extend the period of the guarantee.
- All repairs will be carried out by SYLVA or its authorised agents.
- This guarantee is only valid in the UK.
- We reserve the right to change our warranty terms at any time. Our latest warranty terms can be found on our website.
- SYLVA Battery packs are guaranteed for a 12 month period only.

What's not covered

- The product has been used for commercial, trade, hire or professional use.
- Normal wear and tear, including parts/accessories/consumables that might wear out over time (e.g. batteries, belts, Spool & Lines, Cutting blades, filters, etc.).
- Damage or faults caused by:
 - incorrect assembly, neglect, accident, foreign objects, substances, improper storage, misuse, or modification of the product.
 - Fuel related problems (Contaminated or stale fuel, incorrect fuel mixture or incorrect fuel type)
 - Lack of proper maintenance
- Loss of use of the product
- Cosmetic damage
- Use of parts or accessories which are not SYLVA Genuine components.

CUSTOMER CARE

If you need any assistance or further information regarding your product, please contact the customer care team.

HELPLINE
01405804311



Email: cs@sylvatools.co.uk

Website: www.sylvatools.co.uk

SYLVA

Manufacturer:

BGR8 LTD,

Unit 19 Carlisle House,

Carlisle Street, Goole, DN14 5DS

EC Declaration of Conformity

We herewith declare,



BGR8 LTD

Unit 19, Carlisle House, Carlisle Street, Goole, DN14 5DS

Declare that the product:

Machine Description : BATTERY GARDEN MULTI TOOL

Model: SYMT4B

Complies with the following directives:

2006/42/EC - Machinery Directive

2004/108/EC - Electromagnetic Compatibility Directive

2000/14/EC amended by 2005/88/EC

2011/65/EU

- Noise Emission in the Environment by Equipment for Use Outdoors Directive

- Guaranteed Sound Power Level 96 dB(A) for grass trimmer

Notified Body: TÜV Süd Industrie Service GmbH (NB 0036)

- Guaranteed Sound Power Level 103 dB(A)

for brush cutter, hedge trimmer and chain saw.

Applicable harmonized Standards:

-EN ISO 62841-1:2015

-EN ISO 50636-2-91:2014

-EN ISO 62233:2008

-EN ISO 62841-4-2:2019

-EN ISO 11806-1:2022

-EN ISO 11680-1:2021

-EN IEC 55014-1:2021

-EN IEC 55014-2:2021

-EN 60335-1, -EN 60335-2-29, -EN 62233

-EN 61000-3-2, -EN 61000-3-3;

Tom Walsh

Director

On 22/12/2023

A handwritten signature in black ink that reads 'Tom Walsh'.

Authorised signatory and technical file holder:

BGR8 LTD, Unit 19, Carlisle House, Carlisle Street, Goole, DN14 5DS